

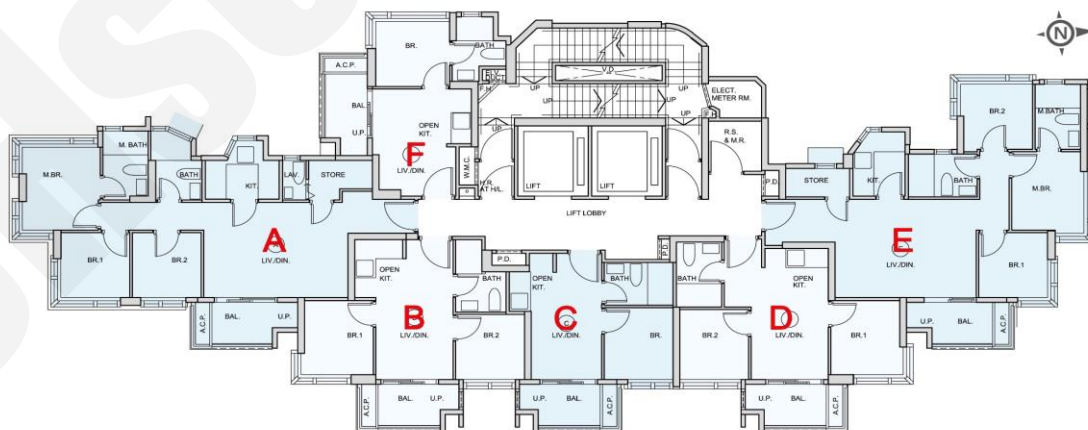
臻博

價單1號

以最高20%折扣計算

制作日期: 2025-09-11

A : 3房 607'		
樓層	訂價	折實價20%
3	\$12,298,000 @\$20,260	\$9,838,400 @\$16,208
5	\$12,525,000 @\$20,634	\$10,020,000 @\$16,507
6	\$12,663,000 @\$20,862	\$10,130,400 @\$16,689
7	\$12,792,000 @\$21,074	\$10,233,600 @\$16,859
8	\$12,856,000 @\$21,180	\$10,284,800 @\$16,944
9	\$12,921,000 @\$21,287	\$10,336,800 @\$17,029
10	\$12,986,000 @\$21,394	\$10,388,800 @\$17,115
11	\$13,051,000 @\$21,501	\$10,440,800 @\$17,201



D : 2房 335'		
樓層	訂價	折實價20%
3	\$6,947,000 @\$20,737	\$5,557,600 @\$16,590
5	\$7,162,000 @\$21,379	\$5,729,600 @\$17,103
6	\$7,307,000 @\$21,812	\$5,845,600 @\$17,450
7	\$7,457,000 @\$22,260	\$5,965,600 @\$17,808
8	\$7,571,000 @\$22,600	\$6,056,800 @\$18,080
9	\$7,608,000 @\$22,710	\$6,086,400 @\$18,168
10	\$7,647,000 @\$22,827	\$6,117,600 @\$18,261
11	\$7,685,000 @\$22,940	\$6,148,000 @\$18,352
12	\$7,723,000 @\$23,054	\$6,178,400 @\$18,443
15	\$7,762,000 @\$23,170	\$6,209,600 @\$18,536
16	\$7,821,000 @\$23,346	\$6,256,800 @\$18,677
17	\$7,880,000 @\$23,522	\$6,304,000 @\$18,818
18	\$7,935,000 @\$23,687	\$6,348,000 @\$18,949
19	\$7,990,000 @\$23,851	\$6,392,000 @\$19,081

E : 3房 580'		
樓層	訂價	折實價20%
3	\$11,247,000 @\$19,391	\$8,997,600 @\$15,513
5	\$11,477,000 @\$19,788	\$9,181,600 @\$15,830
6	\$11,711,000 @\$20,191	\$9,368,800 @\$16,153
7	\$11,890,000 @\$20,500	\$9,512,000 @\$16,400
8	\$12,022,000 @\$20,728	\$9,617,600 @\$16,582
9	\$12,125,000 @\$20,905	\$9,700,000 @\$16,724
10	\$12,186,000 @\$21,010	\$9,748,800 @\$16,808
11	\$12,247,000 @\$21,116	\$9,797,600 @\$16,892
12	\$12,308,000 @\$21,221	\$9,846,400 @\$16,977
15	\$12,371,000 @\$21,329	\$9,896,800 @\$17,063

F : 1房 252'		
樓層	訂價	折實價20%
3	\$4,723,000 @\$18,742	\$3,778,400 @\$14,994
5	\$4,856,000 @\$19,270	\$3,884,800 @\$15,416
6	\$4,956,000 @\$19,667	\$3,964,800 @\$15,733
7	\$5,046,000 @\$20,024	\$4,036,800 @\$16,019
8	\$5,138,000 @\$20,389	\$4,110,400 @\$16,311
9	\$5,233,000 @\$20,766	\$4,186,400 @\$16,613
10	\$5,313,000 @\$21,083	\$4,250,400 @\$16,867
11	\$5,318,000 @\$21,103	\$4,254,400 @\$16,883
12	\$5,323,000 @\$21,123	\$4,258,400 @\$16,898
15	\$5,328,000 @\$21,143	\$4,262,400 @\$16,914
16	\$5,335,000 @\$21,171	\$4,268,000 @\$16,937
17	\$5,340,000 @\$21,190	\$4,272,000 @\$16,952
18	\$5,345,000 @\$21,210	\$4,276,000 @\$16,968
19	\$5,350,000 @\$21,230	\$4,280,000 @\$16,984
20	\$5,356,000 @\$21,254	\$4,284,800 @\$17,003
21	\$5,361,000 @\$21,274	\$4,288,800 @\$17,019
22	\$5,363,000 @\$21,282	\$4,290,400 @\$17,025
23	\$5,366,000 @\$21,294	\$4,292,800 @\$17,035

紅色為最高售價、最高平均呎價；藍色為最低售價、最低平均呎價