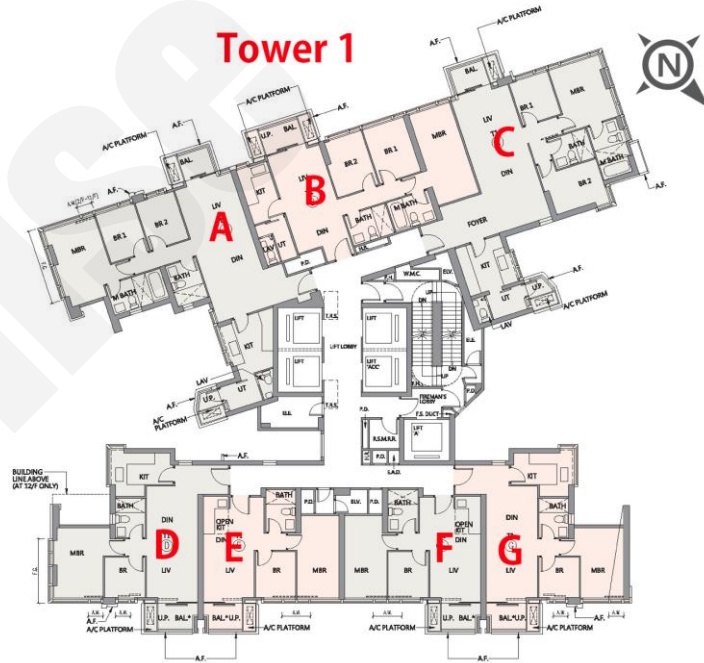


D : 2房 636'		
樓層	訂價	折實價18%
2	\$16,373,000 @\$25,744	\$13,425,860 @\$21,110
3	\$16,455,000 @\$25,873	\$13,493,100 @\$21,216
5	\$16,537,000 @\$26,002	\$13,560,340 @\$21,321
6	\$16,618,000 @\$26,129	\$13,626,760 @\$21,426
7	\$16,701,000 @\$26,259	\$13,694,820 @\$21,533
8	\$16,867,000 @\$26,520	\$13,830,940 @\$21,747
9	\$16,867,000 @\$26,520	\$13,830,940 @\$21,747
10	\$16,951,000 @\$26,653	\$13,899,820 @\$21,855



E : 2房 482'		
樓層	訂價	折實價18%
2	\$12,487,000 @\$25,907	\$10,239,340 @\$21,243
3	\$12,549,000 @\$26,035	\$10,290,180 @\$21,349
5	\$12,611,000 @\$26,164	\$10,341,020 @\$21,454
6	\$12,674,000 @\$26,295	\$10,392,680 @\$21,562
7	\$12,737,000 @\$26,425	\$10,444,340 @\$21,669
8	\$12,863,000 @\$26,687	\$10,547,660 @\$21,883
9	\$12,863,000 @\$26,687	\$10,547,660 @\$21,883
10	\$12,927,000 @\$26,820	\$10,600,140 @\$21,992

F : 2房 482'		
樓層	訂價	折實價18%
2	\$12,270,000 @\$25,456	\$10,061,400 @\$20,874
3	\$12,330,000 @\$25,581	\$10,110,600 @\$20,976
5	\$12,391,000 @\$25,707	\$10,160,620 @\$21,080
6	\$12,454,000 @\$25,838	\$10,212,280 @\$21,187
7	\$12,515,000 @\$25,965	\$10,262,300 @\$21,291
8	\$12,639,000 @\$26,222	\$10,363,980 @\$21,502
9	\$12,639,000 @\$26,222	\$10,363,980 @\$21,502
10	\$12,702,000 @\$26,353	\$10,415,640 @\$21,609
11	\$12,765,000 @\$26,483	\$10,467,300 @\$21,716

G : 2房 624'		
樓層	訂價	折實價18%
2	\$15,574,000 @\$24,958	\$12,770,680 @\$20,466
3	\$15,651,000 @\$25,082	\$12,833,820 @\$20,567
5	\$15,729,000 @\$25,207	\$12,897,780 @\$20,670
6	\$15,807,000 @\$25,332	\$12,961,740 @\$20,772
7	\$15,885,000 @\$25,457	\$13,025,700 @\$20,875
8	\$16,044,000 @\$25,712	\$13,156,080 @\$21,083
9	\$16,044,000 @\$25,712	\$13,156,080 @\$21,083
10	\$16,123,000 @\$25,838	\$13,220,860 @\$21,187
11	\$16,204,000 @\$25,968	\$13,287,280 @\$21,294

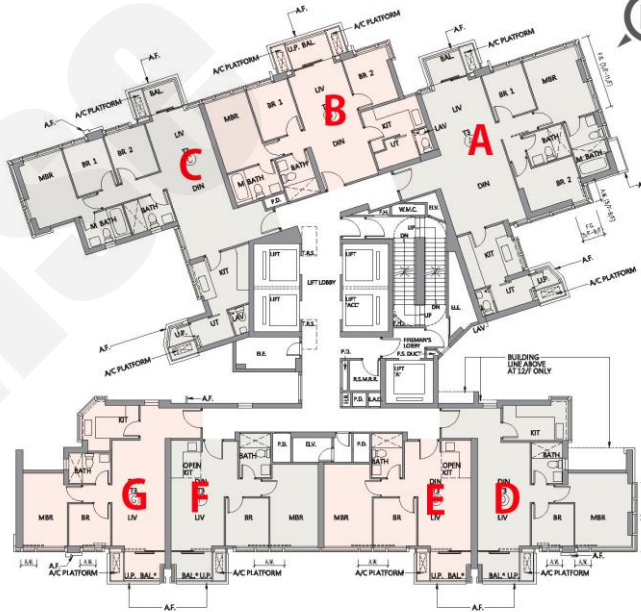
新盤價單表

朗賢峯 IIA期

價單1號

以最高18%折扣計算
制作日期: 2024-09-02

Tower 3



B : 3房 725'		
樓層	訂價	折實價18%
2	\$19,706,000 @\$27,181	\$16,158,920 @\$22,288
3	\$19,804,000 @\$27,316	\$16,239,280 @\$22,399
5	\$19,902,000 @\$27,451	\$16,319,640 @\$22,510
6	\$20,002,000 @\$27,589	\$16,401,640 @\$22,623
7	\$20,101,000 @\$27,726	\$16,482,820 @\$22,735
8	\$20,301,000 @\$28,001	\$16,646,820 @\$22,961
G : 2房 601'		
樓層	訂價	折實價18%
2	\$13,513,000 @\$22,484	\$11,080,660 @\$18,437
3	\$13,580,000 @\$22,596	\$11,135,600 @\$18,528
5	\$14,187,000 @\$23,606	\$11,633,340 @\$19,357
6	\$14,398,000 @\$23,957	\$11,806,360 @\$19,645
7	\$14,612,000 @\$24,313	\$11,981,840 @\$19,937
8	\$14,757,000 @\$24,554	\$12,100,740 @\$20,134
9	\$14,757,000 @\$24,554	\$12,100,740 @\$20,134
10	\$14,830,000 @\$24,676	\$12,160,600 @\$20,234
11	\$14,905,000 @\$24,800	\$12,222,100 @\$20,336
12	\$14,979,000 @\$24,923	\$12,282,780 @\$20,437
15	\$15,016,000 @\$24,985	\$12,313,120 @\$20,488

D : 2房 629'/682'		
樓層	訂價	折實價18%
2	\$14,634,000 @\$23,266	\$11,999,880 @\$19,078
3	\$14,707,000 @\$23,382	\$12,059,740 @\$19,173
5	\$14,926,000 @\$23,730	\$12,239,320 @\$19,458
6	\$15,149,000 @\$24,084	\$12,422,180 @\$19,749
7	\$15,374,000 @\$24,442	\$12,606,680 @\$20,042
8	\$15,527,000 @\$24,685	\$12,732,140 @\$20,242
9	\$15,527,000 @\$24,685	\$12,732,140 @\$20,242
10	\$15,604,000 @\$24,808	\$12,795,280 @\$20,342
11	\$15,682,000 @\$24,932	\$12,859,240 @\$20,444
12	\$15,760,000 @\$25,056	\$12,923,200 @\$20,546
15	\$17,122,000 @\$25,106	\$14,040,040 @\$20,587

E : 2房 490'		
樓層	訂價	折實價18%
2	\$11,478,000 @\$23,424	\$9,411,960 @\$19,208
3	\$11,534,000 @\$23,539	\$9,457,880 @\$19,302
5	\$11,706,000 @\$23,890	\$9,598,920 @\$19,590
6	\$11,880,000 @\$24,245	\$9,741,600 @\$19,881
7	\$12,057,000 @\$24,606	\$9,886,740 @\$20,177
8	\$12,177,000 @\$24,851	\$9,985,140 @\$20,378
9	\$12,177,000 @\$24,851	\$9,985,140 @\$20,378
10	\$12,237,000 @\$24,973	\$10,034,340 @\$20,478
11	\$12,298,000 @\$25,098	\$10,084,360 @\$20,580
12	\$12,359,000 @\$25,222	\$10,134,380 @\$20,682
15	\$12,389,000 @\$25,284	\$10,158,980 @\$20,733

F : 2房 4'	
樓層	訂價
2	\$11,588,000 @\$23,649
3	\$11,645,000 @\$23,765
5	\$11,818,000 @\$24,118
6	\$11,994,000 @\$24,478
7	\$12,173,000 @\$24,843
8	\$12,294,000 @\$25,090
9	\$12,294,000 @\$25,090
10	\$12,355,000 @\$25,214
11	\$12,416,000 @\$25,339
12	\$12,478,000 @\$25,465
15	\$12,509,000 @\$25,529

紅色為最高售價、最高平均呎價；藍色為最低售價、最低平均呎價
以上的物業資料只供參考，一切以發展商最新公布為準，如有任何資料錯漏本網頁不會承擔任何責任。