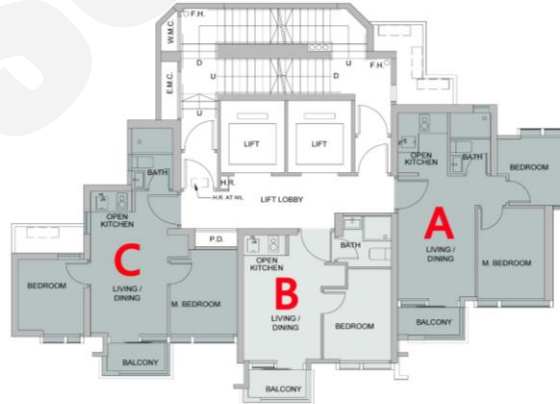


7/F - 12/F, 15/F - 17/F & 19/F - 22/F  
FLOOR PLAN  
7樓至12樓、15樓至17樓及19樓至22樓  
樓面平面圖



B: 1房 243'/244'		
樓層	訂價	折實價4%
6	\$6,248,125 @\$25,607	\$5,998,200 @\$24,583
7	\$6,336,458 @\$26,076	\$6,083,000 @\$25,033
8	\$6,445,833 @\$26,526	\$6,188,000 @\$25,465
9	\$6,486,250 @\$26,692	\$6,226,800 @\$25,625
10	\$6,529,792 @\$26,872	\$6,268,600 @\$25,797
11	\$6,574,375 @\$27,055	\$6,311,400 @\$25,973
12	\$6,666,042 @\$27,432	\$6,399,400 @\$26,335
15	\$6,736,875 @\$27,724	\$6,467,400 @\$26,615
16	\$6,786,875 @\$27,930	\$6,515,400 @\$26,812
17	\$6,806,450 @\$28,010	\$6,534,192 @\$26,890
19	\$6,898,117 @\$28,387	\$6,622,192 @\$27,252
20	\$6,927,083 @\$28,507	\$6,650,000 @\$27,366
21	\$6,977,083 @\$28,712	\$6,698,000 @\$27,564
22	\$7,067,708 @\$29,085	\$6,785,000 @\$27,922

A: 2房 341'		
樓層	訂價	折實價4%
9	\$9,228,333 @\$27,063	\$8,859,200 @\$25,980
10	\$9,297,500 @\$27,265	\$8,925,600 @\$26,175
11	\$9,367,292 @\$27,470	\$8,992,600 @\$26,371
12	\$9,437,500 @\$27,676	\$9,060,000 @\$26,569
15	\$9,508,333 @\$27,884	\$9,128,000 @\$26,768
16	\$9,579,583 @\$28,093	\$9,196,400 @\$26,969
17	\$9,651,458 @\$28,303	\$9,265,400 @\$27,171
18	\$9,807,708 @\$28,762	\$9,415,400 @\$27,611
19	\$9,796,771 @\$28,730	\$9,404,900 @\$27,580
20	\$9,913,125 @\$29,071	\$9,516,600 @\$27,908

C: 2房 326'		
樓層	訂價	折實價4%
9	\$8,914,063 @\$27,344	\$8,557,500 @\$26,250
10	\$8,989,792 @\$27,576	\$8,630,200 @\$26,473
11	\$9,066,250 @\$27,811	\$8,703,600 @\$26,698
12	\$9,143,333 @\$28,047	\$8,777,600 @\$26,925
15	\$9,221,042 @\$28,285	\$8,852,200 @\$27,154
16	\$9,372,500 @\$28,750	\$8,997,600 @\$27,600

紅色為最高售價、最高平均呎價；藍色為最低售價、最低平均呎價