

G: 1房 339'		
樓層	訂價	折實價11.75%
22	\$8,544,000 @\$25,204	\$7,540,080 @\$22,242
21	\$8,424,000 @\$24,850	\$7,434,180 @\$21,930
15	\$7,691,000 @\$22,687	\$6,787,308 @\$20,022
12	\$7,572,000 @\$22,336	\$6,682,290 @\$19,712
10	\$7,334,000 @\$21,634	\$6,472,255 @\$19,092
9	\$7,215,000 @\$21,283	\$6,367,238 @\$18,782
6	\$6,865,000 @\$20,251	\$6,058,363 @\$17,871
5	\$6,757,000 @\$19,932	\$5,963,053 @\$17,590

F: 1房 349'		
樓層	訂價	折實價11.75%
22	\$8,752,000 @\$25,077	\$7,723,640 @\$22,131
21	\$8,629,000 @\$24,725	\$7,615,093 @\$21,820
15	\$7,874,000 @\$22,562	\$6,948,805 @\$19,911
12	\$7,752,000 @\$22,212	\$6,841,140 @\$19,602
10	\$7,506,000 @\$21,507	\$6,624,045 @\$18,980
9	\$7,384,000 @\$21,158	\$6,516,380 @\$18,672
6	\$7,015,000 @\$20,100	\$6,190,738 @\$17,739
5	\$6,877,000 @\$19,705	\$6,068,953 @\$17,390

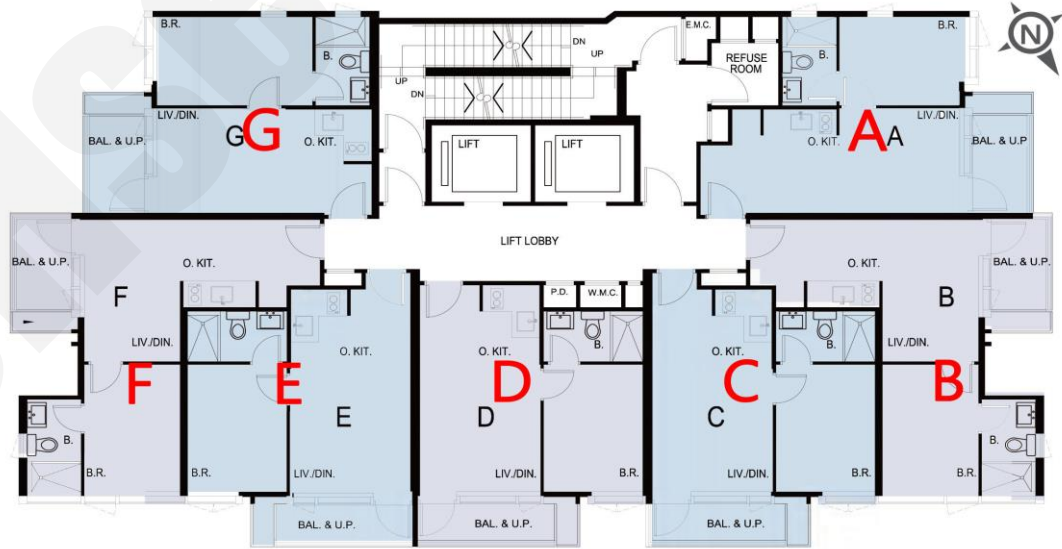
E: 1房 340'		
樓層	訂價	折實價11.75%
22	\$8,578,000 @\$25,229	\$7,570,085 @\$22,265
21	\$8,459,000 @\$24,879	\$7,465,068 @\$21,956
15	\$7,722,000 @\$22,712	\$6,814,665 @\$20,043
12	\$7,603,000 @\$22,362	\$6,709,648 @\$19,734
10	\$7,364,000 @\$21,659	\$6,498,730 @\$19,114
9	\$7,245,000 @\$21,309	\$6,393,713 @\$18,805
6	\$6,894,000 @\$20,276	\$6,083,955 @\$17,894
5	\$6,786,000 @\$19,959	\$5,988,645 @\$17,614

D: 1房 341'		
樓層	訂價	折實價11.75%
22	\$8,458,000 @\$24,804	\$7,464,185 @\$21,889
21	\$8,339,000 @\$24,455	\$7,359,168 @\$21,581
15	\$7,600,000 @\$22,287	\$6,707,000 @\$19,669
12	\$7,481,000 @\$21,938	\$6,601,983 @\$19,361
10	\$7,241,000 @\$21,235	\$6,390,183 @\$18,740
9	\$7,121,000 @\$20,883	\$6,284,283 @\$18,429
6	\$6,769,000 @\$19,850	\$5,973,643 @\$17,518
5	\$6,662,000 @\$19,537	\$5,879,215 @\$17,241

C: 1房 341'		
樓層	訂價	折實價11.75%
22	\$8,517,000 @\$24,977	\$7,516,253 @\$22,042
21	\$8,397,000 @\$24,625	\$7,410,353 @\$21,731
15	\$7,659,000 @\$22,460	\$6,759,068 @\$19,821
12	\$7,539,000 @\$22,109	\$6,653,168 @\$19,511
10	\$7,300,000 @\$21,408	\$6,442,250 @\$18,892
9	\$7,180,000 @\$21,056	\$6,336,350 @\$18,582
6	\$6,828,000 @\$20,023	\$6,025,710 @\$17,671
5	\$6,720,000 @\$19,707	\$5,930,400 @\$17,391

B: 1房 345'		
樓層	訂價	折實價11.75%
22	\$8,803,000 @\$25,516	\$7,768,648 @\$22,618
21	\$8,674,000 @\$25,142	\$7,654,805 @\$22,188
15	\$7,889,000 @\$22,867	\$6,962,043 @\$20,180
12	\$7,760,000 @\$22,493	\$6,848,200 @\$19,850
10	\$7,501,000 @\$21,742	\$6,619,633 @\$19,187
9	\$7,295,000 @\$21,145	\$6,437,838 @\$18,660
6	\$6,712,000 @\$19,455	\$5,923,340 @\$17,169
5	\$6,602,000 @\$19,136	\$5,826,265 @\$16,888

A: 1房 338'		
樓層	訂價	折實價11.75%
22	\$8,592,000 @\$25,420	\$7,582,440 @\$22,433
21	\$8,473,000 @\$25,068	\$7,477,423 @\$22,123
15	\$7,741,000 @\$22,902	\$6,831,433 @\$20,211
12	\$7,622,000 @\$22,550	\$6,726,415 @\$19,901
10	\$7,385,000 @\$21,849	\$6,517,263 @\$19,282
9	\$7,219,000 @\$21,358	\$6,370,768 @\$18,848
6	\$6,688,000 @\$19,787	\$5,902,160 @\$17,462
5	\$6,580,000 @\$19,467	\$5,806,850 @\$17,180



紅色為最高售價、最高平均呎價；藍色為最低售價、最低平均呎價