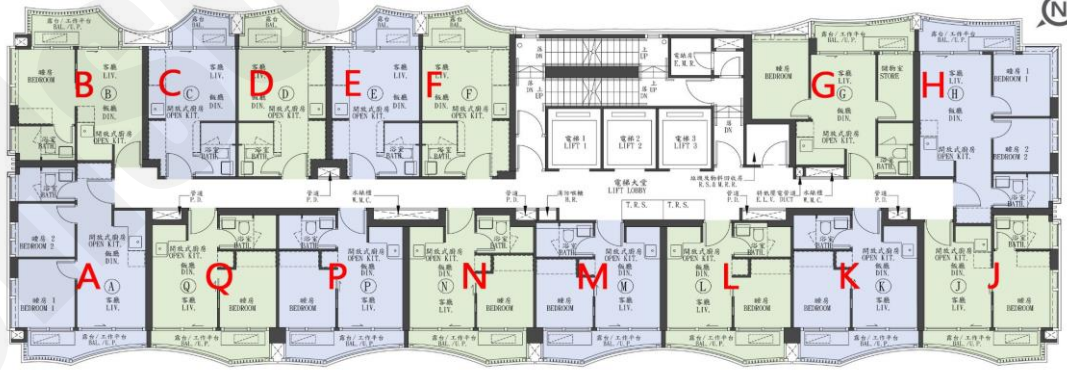


A : 2房 362'		
樓層	訂價	折實價5%
23	\$9,130,000 @\$25,221	\$8,673,500 @\$23,960
22	\$9,103,000 @\$25,146	\$8,647,850 @\$23,889
21	\$9,076,000 @\$25,072	\$8,622,200 @\$23,818
20	\$9,049,000 @\$24,997	\$8,596,550 @\$23,747
19	\$9,022,000 @\$24,923	\$8,570,900 @\$23,677
18	\$8,995,000 @\$24,848	\$8,545,250 @\$23,606
17	\$8,968,000 @\$24,773	\$8,519,600 @\$23,535
16	\$8,941,000 @\$24,698	\$8,493,950 @\$23,464

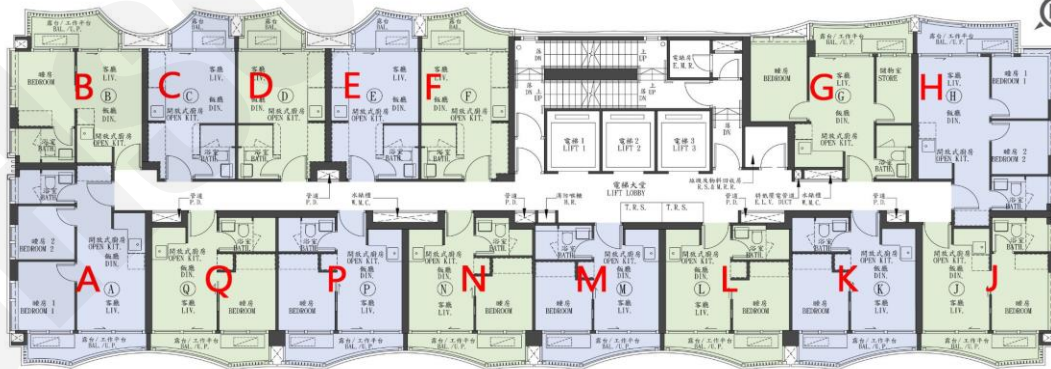


E : 開放式 202'		
樓層	訂價	折實價5%
28	\$5,324,000 @\$26,356	\$5,057,800 @\$25,039
27	\$5,309,000 @\$26,282	\$5,043,550 @\$24,968
26	\$5,293,000 @\$26,203	\$5,028,350 @\$24,893
25	\$5,278,000 @\$26,129	\$5,014,100 @\$24,822
23	\$5,262,000 @\$26,050	\$4,998,900 @\$24,747
22	\$5,247,000 @\$25,975	\$4,984,650 @\$24,676
21	\$5,231,000 @\$25,896	\$4,969,450 @\$24,601
20	\$5,215,000 @\$25,817	\$4,954,250 @\$24,526
19	\$5,200,000 @\$25,743	\$4,940,000 @\$24,455
18	\$5,184,000 @\$25,663	\$4,924,800 @\$24,380
17	\$5,169,000 @\$25,589	\$4,910,550 @\$24,310
16	\$5,153,000 @\$25,510	\$4,896,350 @\$24,234
15	\$5,122,000 @\$25,356	\$4,865,900 @\$24,089
12	\$5,060,000 @\$25,050	\$4,807,000 @\$23,797
11	\$5,013,000 @\$24,817	\$4,762,350 @\$23,576
10	\$4,997,000 @\$24,738	\$4,747,150 @\$23,501
9	\$4,982,000 @\$24,663	\$4,732,900 @\$23,430
8	\$4,982,000 @\$24,663	\$4,732,900 @\$23,430
7	\$4,951,000 @\$24,510	\$4,703,450 @\$23,284
6	\$4,914,000 @\$24,327	\$4,668,300 @\$23,110

L : 1房 251'		
樓層	訂價	折實價5%
28	\$6,442,000 @\$25,665	\$6,119,900 @\$24,382
27	\$6,424,000 @\$25,594	\$6,102,800 @\$24,314
26	\$6,405,000 @\$25,518	\$6,084,750 @\$24,242
25	\$6,386,000 @\$25,442	\$6,066,700 @\$24,170
23	\$6,367,000 @\$25,367	\$6,048,650 @\$24,098
22	\$6,349,000 @\$25,295	\$6,031,550 @\$24,030
21	\$6,330,000 @\$25,219	\$6,013,500 @\$23,958
20	\$6,311,000 @\$25,143	\$5,995,450 @\$23,886
19	\$6,293,000 @\$25,072	\$5,978,350 @\$23,818
18	\$6,274,000 @\$24,996	\$5,960,300 @\$23,746
17	\$6,255,000 @\$24,920	\$5,942,250 @\$23,674
16	\$6,237,000 @\$24,849	\$5,925,150 @\$23,606
15	\$6,218,000 @\$24,773	\$5,907,100 @\$23,534
12	\$6,199,000 @\$24,697	\$5,889,050 @\$23,462
11	\$6,181,000 @\$24,625	\$5,871,950 @\$23,394
10	\$6,162,000 @\$24,550	\$5,853,900 @\$23,322
9	\$6,143,000 @\$24,474	\$5,835,850 @\$23,250
8	\$6,143,000 @\$24,474	\$5,835,850 @\$23,250
7	\$6,098,000 @\$24,295	\$5,793,100 @\$23,080
6	\$6,072,000 @\$24,191	\$5,768,400 @\$22,982

E : 開放式 575'		
樓層	訂價	折實價5%
28	\$6,968,000 @\$25,903	\$6,619,600 @\$24,608
27	\$6,948,000 @\$25,829	\$6,600,600 @\$24,538
26	\$6,927,000 @\$25,751	\$6,580,650 @\$24,463
25	\$6,906,000 @\$25,673	\$6,560,700 @\$24,389
23	\$6,885,000 @\$25,595	\$6,540,750 @\$24,315
22	\$6,865,000 @\$25,520	\$6,521,750 @\$24,244
21	\$6,844,000 @\$25,442	\$6,501,800 @\$24,170
20	\$6,823,000 @\$25,364	\$6,481,850 @\$24,096
19	\$6,802,000 @\$25,286	\$6,461,900 @\$24,022
18	\$6,782,000 @\$25,212	\$6,442,900 @\$23,951
17	\$6,761,000 @\$25,134	\$6,422,950 @\$23,877
16	\$6,740,000 @\$25,056	\$6,403,000 @\$23,803
15	\$6,719,000 @\$24,978	\$6,383,050 @\$23,729
12	\$6,699,000 @\$24,903	\$6,364,050 @\$23,658
11	\$6,678,000 @\$24,825	\$6,344,100 @\$23,584
10	\$6,657,000 @\$24,747	\$6,324,150 @\$23,510
9	\$6,636,000 @\$24,669	\$6,304,200 @\$23,436
8	\$6,636,000 @\$24,669	\$6,304,200 @\$23,436
7	\$6,616,000 @\$24,595	\$6,285,200 @\$23,365
6	\$6,595,000 @\$24,517	\$6,265,250 @\$23,291

紅色為最高售價、最高平均呎價；藍色為最低售價、最低平均呎價



A : 2房 362'		
樓層	訂價	折實價5%
28	\$9,369,000 @\$25,881	<del>\$8,900,650</del> @\$24,587
27	\$9,342,000 @\$25,807	\$8,874,900 @\$24,516
26	\$9,315,000 @\$25,732	\$8,849,250 @\$24,445
25	\$9,287,000 @\$25,655	\$8,822,650 @\$24,372
23	\$9,130,000 @\$25,221	\$8,673,500 @\$23,960
22	\$9,103,000 @\$25,146	\$8,647,850 @\$23,889
21	\$9,076,000 @\$25,072	\$8,622,200 @\$23,818
20	\$9,049,000 @\$24,997	\$8,596,550 @\$23,747
19	\$9,022,000 @\$24,923	\$8,570,900 @\$23,677
18	\$8,995,000 @\$24,848	\$8,545,250 @\$23,606
17	\$8,968,000 @\$24,773	\$8,519,600 @\$23,535
16	\$8,941,000 @\$24,624	\$8,468,300 @\$23,393
15	\$8,899,000 @\$24,583	\$8,454,050 @\$23,354
12	\$8,884,000 @\$24,541	\$8,439,800 @\$23,314
11	\$8,867,000 @\$24,494	\$8,423,650 @\$23,270
10	\$8,849,000 @\$24,445	\$8,406,550 @\$23,223
9	\$8,822,000 @\$24,370	\$8,380,900 @\$23,152
8	\$8,822,000 @\$24,370	\$8,380,900 @\$23,152
7	\$8,795,000 @\$24,296	\$8,355,250 @\$23,081
6	\$8,750,000 @\$24,171	<del>\$8,312,500</del> @\$22,963

B : 1房 275'		
樓層	訂價	折實價5%
28	\$7,117,000 @\$25,880	\$6,761,150 @\$24,586
27	\$7,096,000 @\$25,804	\$6,741,200 @\$24,513
26	\$7,075,000 @\$25,727	\$6,721,250 @\$24,441
25	\$7,054,000 @\$25,651	\$6,701,300 @\$24,368
23	\$7,033,000 @\$25,575	\$6,681,350 @\$24,296
22	\$7,012,000 @\$25,498	\$6,661,400 @\$24,223
21	\$6,991,000 @\$25,422	\$6,641,450 @\$24,151
20	\$6,969,000 @\$25,342	\$6,620,550 @\$24,075

D : 開放式 202'		
樓層	訂價	折實價5%
26	\$5,339,000 @\$26,431	<del>\$5,072,050</del> @\$25,108
25	\$5,323,000 @\$26,351	\$5,056,850 @\$25,034
23	\$5,307,000 @\$26,272	\$5,041,650 @\$24,959
22	\$5,292,000 @\$26,198	\$5,027,400 @\$24,888
21	\$5,276,000 @\$26,119	\$5,012,200 @\$24,813
20	\$5,260,000 @\$26,040	\$4,997,000 @\$24,738
19	\$5,244,000 @\$25,960	\$4,981,800 @\$24,662
18	\$5,228,000 @\$25,881	\$4,966,600 @\$24,587

K : 1房 270'		
樓層	訂價	折實價5%
28	\$6,965,000 @\$25,796	\$6,616,750 @\$24,506
27	\$6,945,000 @\$25,722	\$6,597,750 @\$24,436
26	\$6,925,000 @\$25,648	\$6,578,750 @\$24,366
25	\$6,905,000 @\$25,574	\$6,559,750 @\$24,295
23	\$6,885,000 @\$25,500	\$6,540,750 @\$24,225
22	\$6,865,000 @\$25,426	\$6,521,750 @\$24,155
21	\$6,845,000 @\$25,352	\$6,502,750 @\$24,084
20	\$6,825,000 @\$25,278	\$6,483,750 @\$24,014
19	\$6,805,000 @\$25,204	\$6,464,750 @\$23,944
18	\$6,785,000 @\$25,130	\$6,445,750 @\$23,873
17	\$6,765,000 @\$25,056	\$6,426,750 @\$23,803
16	\$6,745,000 @\$24,981	\$6,407,750 @\$23,732
15	\$6,725,000 @\$24,907	\$6,388,750 @\$23,662
12	\$6,705,000 @\$24,833	\$6,369,750 @\$23,592
11	\$6,685,000 @\$24,759	\$6,350,750 @\$23,521
10	\$6,665,000 @\$24,685	\$6,331,750 @\$23,451
9	\$6,645,000 @\$24,611	\$6,312,750 @\$23,381
8	\$6,635,000 @\$24,574	\$6,303,250 @\$23,345
7	\$6,615,000 @\$24,500	\$6,284,250 @\$23,275
6	\$6,595,000 @\$24,426	\$6,265,250 @\$23,205

P : 1房 269'		
樓層	訂價	折實價5%
28	\$6,972,000 @\$25,918	\$6,623,400 @\$24,622
27	\$6,952,000 @\$25,844	\$6,604,400 @\$24,552
26	\$6,932,000 @\$25,770	\$6,585,400 @\$24,481
25	\$6,912,000 @\$25,695	\$6,566,400 @\$24,410
23	\$6,892,000 @\$25,621	\$6,547,400 @\$24,340
22	\$6,872,000 @\$25,546	\$6,528,400 @\$24,269
21	\$6,852,000 @\$25,472	\$6,509,400 @\$24,199
20	\$6,832,000 @\$25,398	\$6,490,400 @\$24,128
19	\$6,812,000 @\$25,323	\$6,471,400 @\$24,057
18	\$6,792,000 @\$25,249	\$6,452,400 @\$23,987
17	\$6,772,000 @\$25,175	\$6,433,400 @\$23,916
16	\$6,752,000 @\$25,100	\$6,414,400 @\$23,845
15	\$6,732,000 @\$25,026	\$6,395,400 @\$23,775
12	\$6,712,000 @\$24,952	\$6,376,400 @\$23,704
11	\$6,692,000 @\$24,877	\$6,357,400 @\$23,633
10	\$6,672,000 @\$24,803	\$6,338,400 @\$23,563
9	\$6,652,000 @\$24,729	\$6,319,400 @\$23,492
8	\$6,632,000 @\$24,654	\$6,300,400 @\$23,422
7	\$6,612,000 @\$24,580	\$6,281,400 @\$23,351

紅色為最高售價、最高平均呎價；藍色為最低售價、最低平均呎價