

雋峇

價單1號

以最高10%折扣計算  
制作日期: 2021-12-23

F: 開放式 193'		
樓層	訂價	折實價10%
25	\$5,488,000 @ \$28,435	\$4,939,200 @ \$25,592
23	\$5,439,000 @ \$28,181	\$4,895,100 @ \$25,363
17	\$5,155,000 @ \$26,710	\$4,639,500 @ \$24,039
16	\$5,109,000 @ \$26,472	\$4,598,100 @ \$23,824
15	\$5,063,000 @ \$26,233	\$4,556,700 @ \$23,610
12	\$5,018,000 @ \$26,000	\$4,516,200 @ \$23,400
11	\$4,973,000 @ \$25,767	\$4,475,700 @ \$23,190
8	\$4,823,000 @ \$24,990	\$4,340,700 @ \$22,491
7	\$4,780,000 @ \$24,767	\$4,302,000 @ \$22,290
6	\$4,737,000 @ \$24,544	\$4,263,300 @ \$22,090
5	\$4,692,000 @ \$24,311	\$4,222,800 @ \$21,880

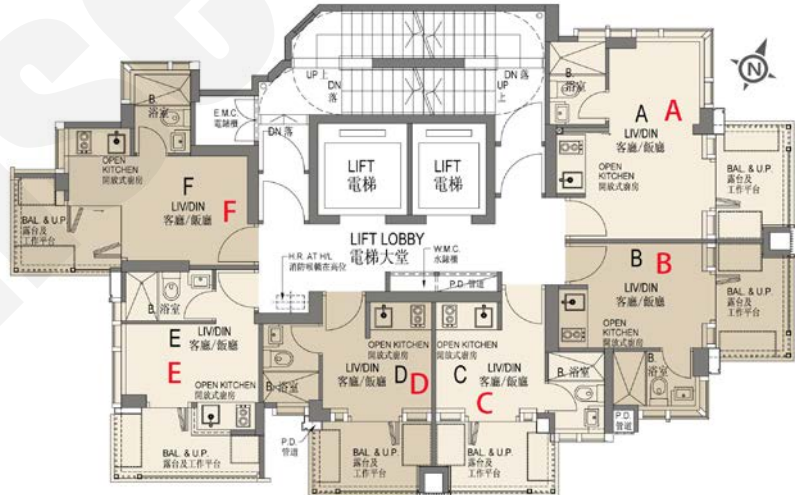
E: 開放式 160'		
樓層	訂價	折實價10%
25	\$4,792,000 @ \$29,950	\$4,312,800 @ \$26,955
23	\$4,764,000 @ \$29,775	\$4,287,600 @ \$26,798
19	\$4,605,000 @ \$28,781	\$4,144,500 @ \$25,903
18	\$4,566,000 @ \$28,538	\$4,109,400 @ \$25,684
17	\$4,528,000 @ \$28,300	\$4,075,200 @ \$25,470
16	\$4,490,000 @ \$28,063	\$4,041,000 @ \$25,256
15	\$4,452,000 @ \$27,825	\$4,006,800 @ \$25,043
12	\$4,414,000 @ \$27,588	\$3,972,600 @ \$24,829
11	\$4,377,000 @ \$27,356	\$3,939,300 @ \$24,621
8	\$4,284,000 @ \$26,775	\$3,855,600 @ \$24,098
7	\$4,250,000 @ \$26,563	\$3,825,000 @ \$23,906
6	\$4,214,000 @ \$26,338	\$3,792,600 @ \$23,704
5	\$4,178,000 @ \$26,113	\$3,760,200 @ \$23,501

D: 開放式 152'		
樓層	訂價	折實價10%
25	\$4,404,000 @ \$28,974	\$3,963,600 @ \$26,076
23	\$4,365,000 @ \$28,717	\$3,928,500 @ \$25,845
17	\$4,136,000 @ \$27,211	\$3,722,400 @ \$24,489
16	\$4,099,000 @ \$26,967	\$3,689,100 @ \$24,270
15	\$4,063,000 @ \$26,730	\$3,656,700 @ \$24,057
12	\$4,027,000 @ \$26,493	\$3,624,300 @ \$23,844
11	\$3,991,000 @ \$26,257	\$3,591,900 @ \$23,631
8	\$3,869,000 @ \$25,454	\$3,482,100 @ \$22,909
7	\$3,835,000 @ \$25,230	\$3,451,500 @ \$22,707
6	\$3,801,000 @ \$25,007	\$3,420,900 @ \$22,506
5	\$3,764,000 @ \$24,763	\$3,387,600 @ \$22,287

A: 開放式 288'		
樓層	訂價	折實價10%
25	\$6,618,000 @ \$22,979	\$5,966,200 @ \$20,681
23	\$6,562,000 @ \$22,785	\$5,905,800 @ \$20,506
17	\$6,197,000 @ \$21,517	\$5,577,300 @ \$19,366
16	\$6,145,000 @ \$21,337	\$5,530,500 @ \$19,203
15	\$6,093,000 @ \$21,156	\$5,483,700 @ \$19,041
12	\$6,042,000 @ \$20,979	\$5,437,800 @ \$18,881
11	\$5,991,000 @ \$20,802	\$5,391,900 @ \$18,722
8	\$5,829,000 @ \$20,240	\$5,246,100 @ \$18,216
7	\$5,760,000 @ \$20,000	\$5,184,000 @ \$18,000
6	\$5,692,000 @ \$19,764	\$5,122,800 @ \$17,788
5	\$5,624,000 @ \$19,528	\$5,061,600 @ \$17,575

C: 開放式 152'		
樓層	訂價	折實價10%
25	\$4,441,000 @ \$29,217	\$3,996,900 @ \$26,295
23	\$4,401,000 @ \$28,954	\$3,960,900 @ \$26,059
17	\$4,171,000 @ \$27,441	\$3,753,900 @ \$24,697
16	\$4,134,000 @ \$27,197	\$3,720,600 @ \$24,478
15	\$4,097,000 @ \$26,954	\$3,687,300 @ \$24,259
12	\$4,060,000 @ \$26,711	\$3,654,000 @ \$24,039
11	\$4,024,000 @ \$26,474	\$3,621,600 @ \$23,826
8	\$3,904,000 @ \$25,684	\$3,513,600 @ \$23,116
7	\$3,869,000 @ \$25,454	\$3,482,100 @ \$22,909
6	\$3,835,000 @ \$25,230	\$3,451,500 @ \$22,707
5	\$3,800,000 @ \$25,000	\$3,420,000 @ \$22,500

B: 開放式 168'		
樓層	訂價	折實價10%
25	\$4,991,000 @ \$29,708	\$4,491,900 @ \$26,738
23	\$4,946,000 @ \$29,440	\$4,451,400 @ \$26,496
19	\$4,772,000 @ \$28,405	\$4,294,800 @ \$25,564
18	\$4,729,000 @ \$28,149	\$4,256,100 @ \$25,334
17	\$4,687,000 @ \$27,899	\$4,218,300 @ \$25,109
16	\$4,645,000 @ \$27,649	\$4,180,500 @ \$24,884
15	\$4,604,000 @ \$27,405	\$4,143,600 @ \$24,664
12	\$4,563,000 @ \$27,161	\$4,106,700 @ \$24,445
11	\$4,522,000 @ \$26,917	\$4,069,800 @ \$24,225
8	\$4,430,000 @ \$26,369	\$3,987,000 @ \$23,732
7	\$4,390,000 @ \$26,131	\$3,951,000 @ \$23,518
6	\$4,351,000 @ \$25,899	\$3,915,900 @ \$23,309
5	\$4,312,000 @ \$25,667	\$3,880,800 @ \$23,100
6	\$3,835,000 @ \$25,230	\$3,451,500 @ \$22,707
5	\$3,800,000 @ \$25,000	\$3,420,000 @ \$22,500



紅色為最高售價、最高平均呎價；藍色為最低售價、最低平均呎價

以上的物業資料只供參考，一切以發展商最新公布為準，如有任何資料錯漏本網頁不會承擔任何責任。