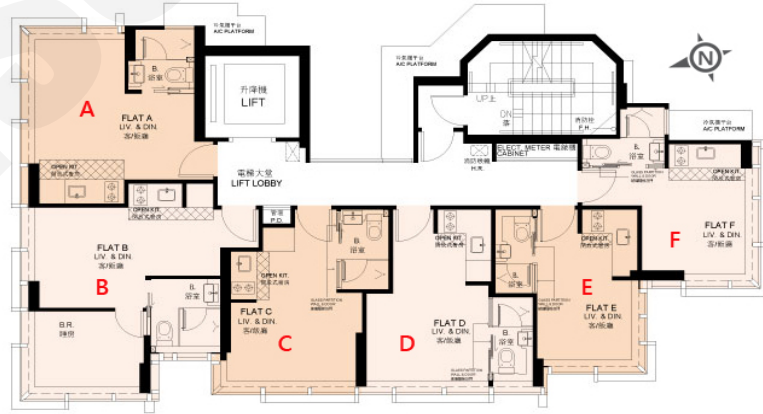


尚宜

價單1號

以最高12%折扣計算  
制作日期: 2021-10-04

F: 開放式 152'		
樓層	訂價	折實價12%
6	\$3,546,000 @\$23,329	\$3,120,480 @\$20,529
5	\$3,331,000 @\$21,914	\$2,931,280 @\$19,285
3	\$3,100,000 @\$20,395	\$2,728,000 @\$17,947
2	\$3,025,000 @\$19,901	\$2,662,000 @\$17,513
1	\$3,421,000 @\$22,507	\$3,010,480 @\$19,806
19	\$12,168,000 @\$27,405	\$10,525,320 @\$23,706
18	\$12,168,000 @\$27,405	\$10,525,320 @\$23,706
17	\$12,014,000 @\$27,059	\$10,392,110 @\$23,406
16	\$11,938,000 @\$26,887	\$10,326,370 @\$23,258
3	\$16,545,000 @\$25,731	\$14,311,425 @\$22,257
2	\$16,434,000 @\$25,558	\$14,215,410 @\$22,108
1	\$16,137,000 @\$25,096	\$13,958,505 @\$21,708



E: 開放式 138'		
樓層	訂價	折實價12%
6	\$3,254,000 @\$23,580	\$2,863,520 @\$20,750
5	\$3,057,000 @\$22,152	\$2,690,160 @\$19,494
3	\$2,871,000 @\$20,804	\$2,526,480 @\$18,308
2	\$2,760,000 @\$20,000	\$2,428,800 @\$17,600
1	\$2,825,000 @\$20,471	\$2,486,000 @\$18,014

C: 開放式 169'		
樓層	訂價	折實價12%
6	\$3,682,000 @\$21,787	\$3,240,160 @\$19,173
5	\$3,558,000 @\$21,053	\$3,131,040 @\$18,527
3	\$3,342,000 @\$19,775	\$2,940,960 @\$17,402
2	\$3,261,000 @\$19,296	\$2,869,680 @\$16,980
1	\$3,070,000 @\$18,166	\$2,701,600 @\$15,986

B: 1房 259'		
樓層	訂價	折實價12%
6	\$5,823,000 @\$22,483	\$5,124,240 @\$19,785
5	\$5,628,000 @\$21,730	\$4,952,640 @\$19,122
3	\$5,415,000 @\$20,907	\$4,765,200 @\$18,398
2	\$5,232,000 @\$20,201	\$4,604,160 @\$17,777
1	\$5,099,000 @\$19,687	\$4,487,120 @\$17,325

A: 開放式 201'		
樓層	訂價	折實價12%
6	\$4,609,000 @\$22,930	\$4,055,920 @\$20,179
5	\$4,455,000 @\$22,164	\$3,920,400 @\$19,504
3	\$4,321,000 @\$21,498	\$3,802,480 @\$18,918
2	\$4,142,000 @\$20,607	\$3,644,960 @\$18,134
1	\$4,272,000 @\$21,254	\$3,759,360 @\$18,703

D: 開放式 168'		
樓層	訂價	折實價12%
6	\$3,626,000 @\$21,583	\$3,190,880 @\$18,993
5	\$3,504,000 @\$20,857	\$3,083,520 @\$18,354
3	\$3,323,000 @\$19,780	\$2,924,240 @\$17,406
2	\$3,242,000 @\$19,298	\$2,852,960 @\$16,982
1	\$3,182,000 @\$18,940	\$2,800,160 @\$16,668

紅色為最高售價、最高平均呎價；藍色為最低售價、最低平均呎價

以上的物業資料只供參考，一切以發展商最新公布為準，如有任何資料錯漏本網頁不會承擔任何責任。