

Monaco

以上單位訂價圖由28HSE製作

製作日期：2021年01月12日

資料來源：新盤網頁(Monaco)

C	
訂價	即供價(-5%)
3房 551'	
20	\$16,785,000 @ \$30,463
19	\$16,735,000 @ \$30,372
18	\$16,685,000 @ \$30,281
15	\$16,487,000 @ \$29,922
12	\$16,437,000 @ \$29,831
11	\$16,388,000 @ \$29,742
10	\$16,339,000 @ \$29,653
9	\$16,290,000 @ \$29,564
7	\$16,145,000 @ \$29,301
6	\$16,096,000 @ \$29,212
5	\$16,048,000 @ \$29,125
3	\$16,000,000 @ \$29,038



2A座

E	
訂價	即供價(-5%)
3房及儲物房 674'	
17	\$19,788,000 @ \$37,891
16	\$19,729,000 @ \$37,808
15	\$19,670,000 @ \$37,725
12	\$19,611,000 @ \$37,642
9	\$19,435,000 @ \$37,394
8	\$19,377,000 @ \$37,312
6	\$19,204,000 @ \$37,068
5	\$19,147,000 @ \$36,985
3	\$18,901,000 @ \$36,641

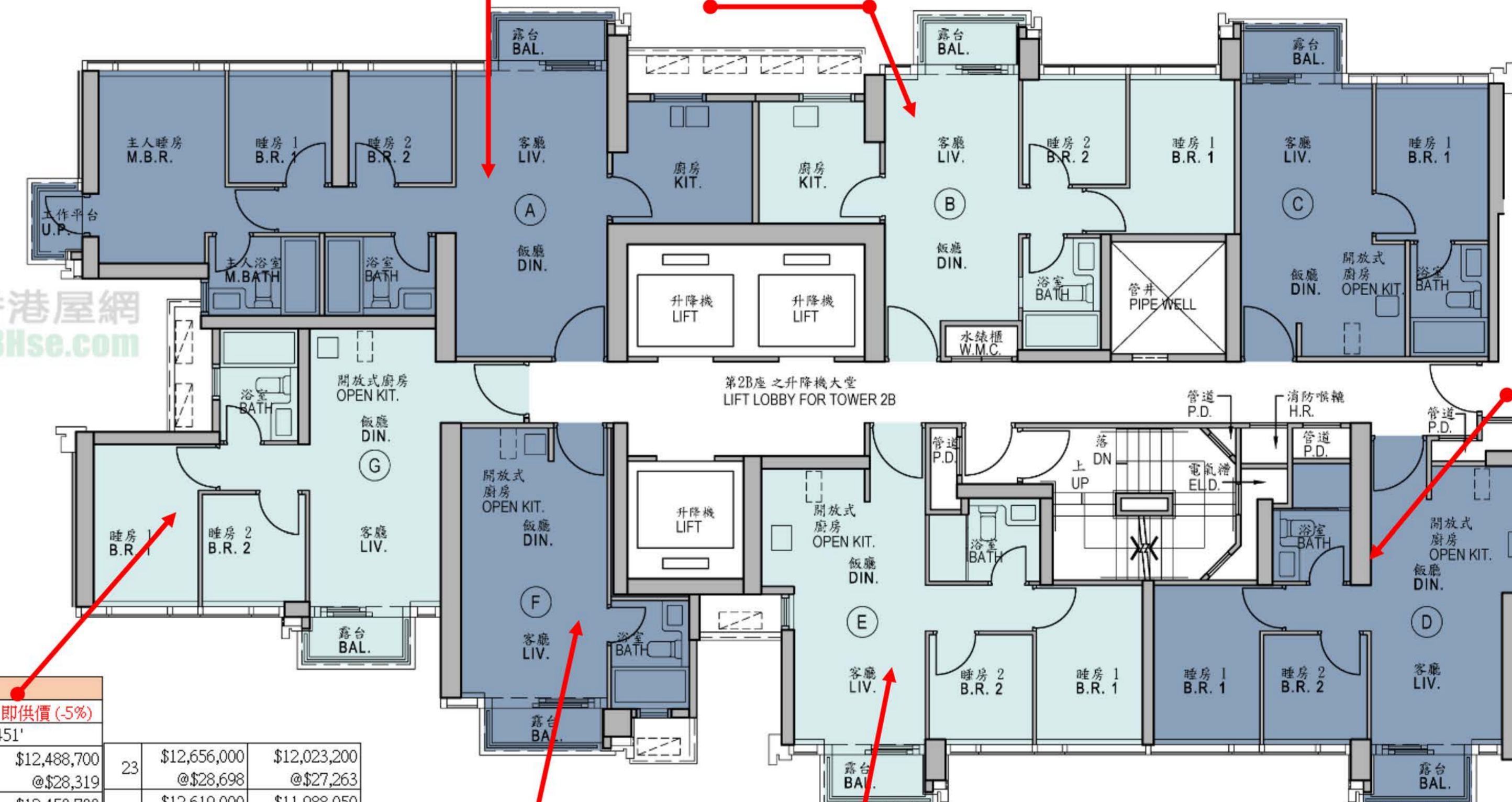
F	
訂價	即供價(-5%)
1房 354'	
25	\$10,709,000 @ \$20,251
23	\$10,693,000 @ \$20,206
22	\$10,677,000 @ \$20,161
21	\$10,661,000 @ \$20,116
20	\$10,629,000 @ \$20,025
19	\$10,613,000 @ \$20,082,350
18	\$10,529,000 @ \$20,002,550
17	\$10,466,000 @ \$19,942,700
16	\$10,438,000 @ \$19,916,100

A	
訂價	即供價(-5%)
3房及儲物房 762'	
27	\$23,757,000 @ \$45,177
25	\$23,615,000 @ \$45,091
23	\$23,544,000 @ \$45,009
21	\$23,404,000 @ \$44,927
20	\$23,334,000 @ \$44,845
19	\$23,264,000 @ \$44,763
17	\$22,604,000 @ \$43,958
16	\$22,204,000 @ \$43,592

A	
訂價	即供價(-5%)
3房連套房 727'	
16	\$22,016,000 @ \$42,031
9	\$21,674,000 @ \$41,902
5	\$21,352,000 @ \$41,672

G	
訂價	即供價(-5%)
2房 441'451'	
35	\$13,146,000 @ \$25,082
33	\$13,106,000 @ \$25,000
32	\$13,067,000 @ \$24,918
31	\$13,028,000 @ \$24,836
30	\$12,989,000 @ \$24,754
29	\$12,950,000 @ \$24,672
28	\$12,911,000 @ \$24,590
27	\$12,771,000 @ \$24,508
26	\$12,732,000 @ \$24,426
25	\$12,694,000 @ \$24,344

B	
訂價	即供價(-5%)
2房 480'	
27	\$15,258,000 @ \$28,788
26	\$15,213,000 @ \$28,706
25	\$15,167,000 @ \$28,624
23	\$15,122,000 @ \$28,542
22	\$15,077,000 @ \$28,460
21	\$14,908,000 @ \$28,312
20	\$14,986,000 @ \$28,374
19	\$14,942,000 @ \$28,292
18	\$14,897,000 @ \$28,210
17	\$14,808,000 @ \$28,128



2B座

D	
訂價	即供價(-5%)
2房 437'	
18	\$13,002,000 @ \$24,753
17	\$12,925,000 @ \$24,671
16	\$12,886,000 @ \$24,589
15	\$12,848,000 @ \$24,507
12	\$12,809,000 @ \$24,425
11	\$12,707,000 @ \$24,343
10	\$12,669,000 @ \$24,261
8	\$12,657,000 @ \$24,179
7	\$12,519,000 @ \$24,037
6	\$12,481,000 @ \$23,955
5	\$12,444,000 @ \$23,873
3	\$12,284,000 @ \$23,731

F	
訂價	即供價(-5%)
開放式 280'	
19	\$8,137,000 @ \$15,461
18	\$8,113,000 @ \$15,379
17	\$8,064,000 @ \$15,317
16	\$8,044,000 @ \$15,235
15	\$8,020,000 @ \$15,153
12	\$7,996,000 @ \$15,071
11	\$7,972,000 @ \$14,989
10	\$7,948,000 @ \$14,907
9	\$7,925,000 @ \$14,825
8	\$7,901,000 @ \$14,743
7	\$7,805,000 @ \$14,661
6	\$7,738,000 @ \$14,579
5	\$7,672,000 @ \$14,497
3	\$7,504,000 @ \$14,315

E	
訂價	即供價(-5%)
2房 445'	
31	\$13,564,000 @ \$25,739
30	\$13,524,000 @ \$25,657
29	\$13,483,000 @ \$25,575
28	\$13,443,000 @ \$25,493
27	\$13,363,000 @ \$25,411
26	\$13,323,000 @ \$25,329
25	\$13,283,000 @ \$25,247
23	\$13,243,000 @ \$25,165
22	\$13,204,000 @ \$25,083
21	\$13,164,000 @ \$25,001
20	\$13,125,000 @ \$24,919
19	\$13,020,000 @ \$24,837

以上單位訂價圖由28HSE製作

製作日期：2021年01月12日

資料來源：新盤網頁(Monaco)