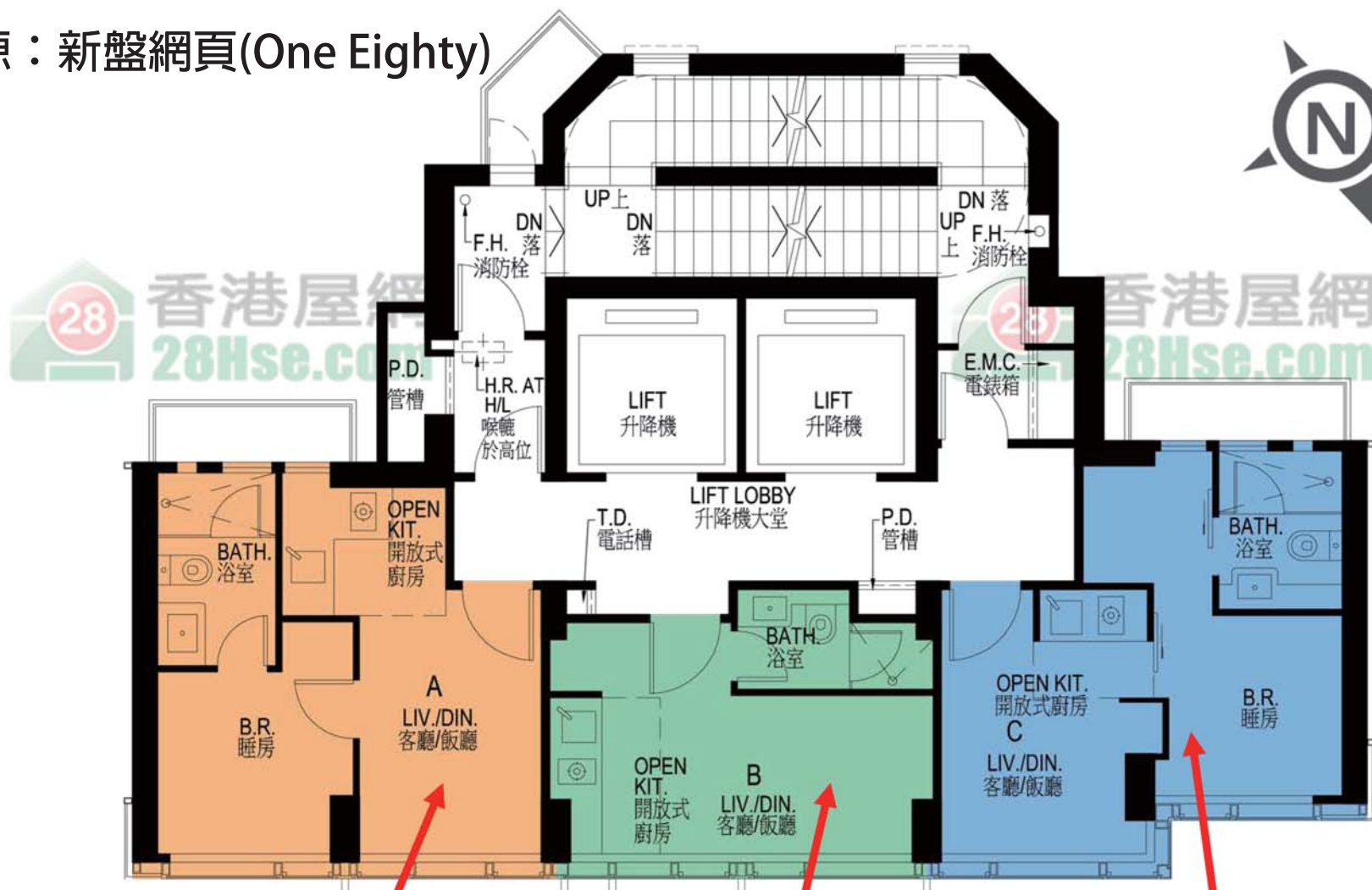


以上單位訂價圖由28HSE製作

製作日期：2019年10月28日

資料來源：新盤網頁(One Eighty)



A	
訂價	
1房	331'x253'
23	\$10,677,000 @\$32,257
22	\$10,480,000 @\$31,662
21	\$10,282,000 @\$31,063
19	\$7,717,000 @\$30,502
16	\$7,263,000 @\$28,708
15	\$7,208,000 @\$28,490
11	\$7,032,000 @\$27,794
10	\$6,934,000 @\$27,407
7	\$6,644,000 @\$26,261
6	\$6,541,000 @\$25,854

B	
訂價	
開放式	332'x164'
26	\$11,106,000 @\$33,452
22	\$10,511,000 @\$31,660
21	\$10,313,000 @\$31,063
19	\$5,099,000 @\$31,091
17	\$4,867,000 @\$29,677
16	\$4,805,000 @\$29,299
15	\$4,742,000 @\$28,915
12	\$4,679,000 @\$28,530
11	\$4,616,000 @\$28,146
10	\$4,554,000 @\$27,768
9	\$4,491,000 @\$27,384
7	\$4,365,000 @\$26,616
6	\$4,303,000 @\$26,238

C	
訂價	
1房	247'
19	\$7,537,000 @\$30,514
16	\$7,147,000 @\$28,935
15	\$7,053,000 @\$28,555
11	\$6,864,000 @\$27,789
10	\$6,769,000 @\$27,405
7	\$6,227,000 @\$25,211
6	\$6,130,000 @\$24,818